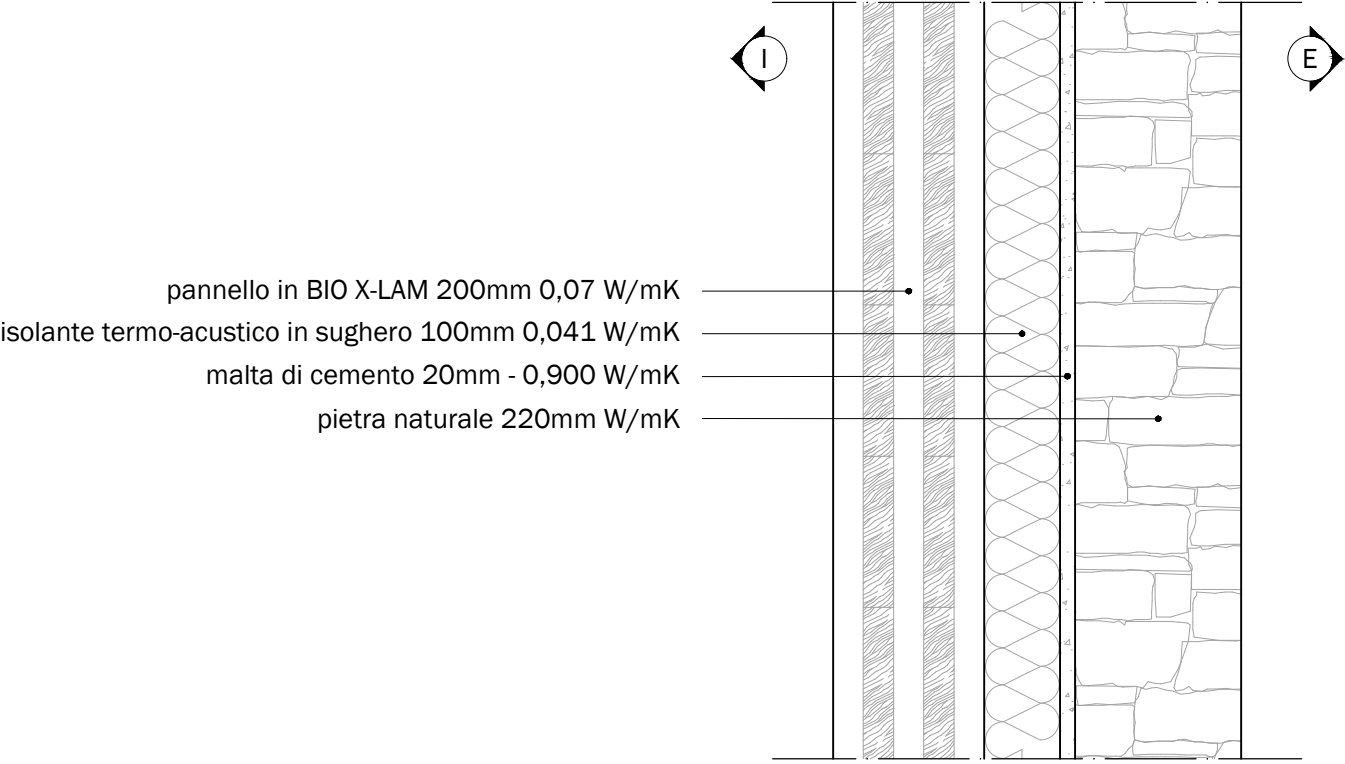
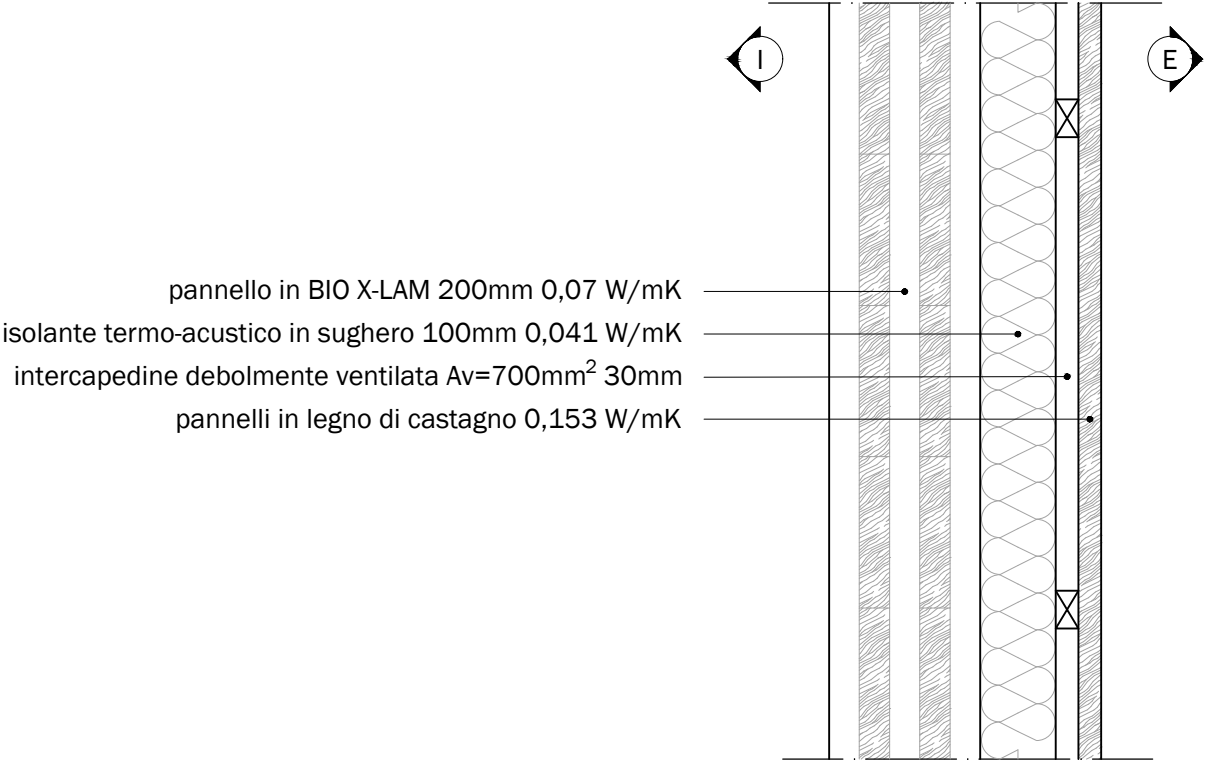


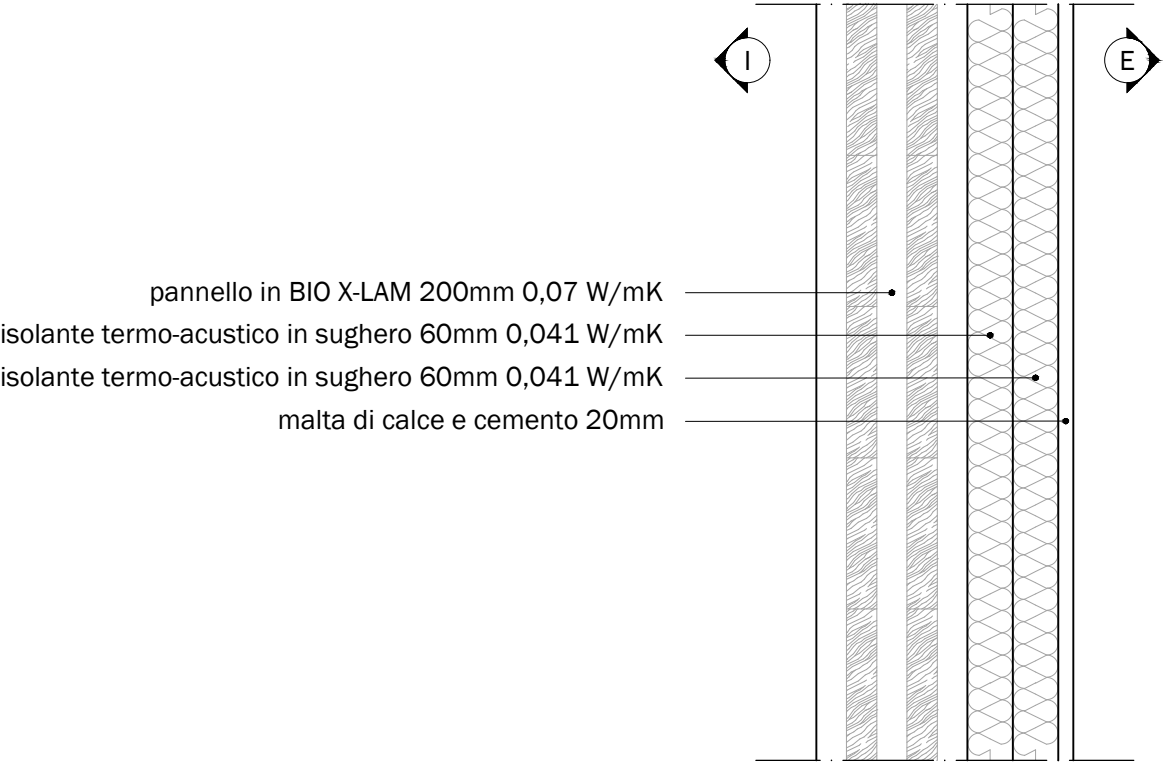
Finitura esterna in pietra T1 - 540mm
U = 0,178 W/m²K



Finitura esterna in legno T2 - 360mm
U = 0,172 W/m²K



Finitura esterna intonaco senza laterizi T3 - 340mm
U = 0,167 W/m²K



Finitura esterna intonaco, con laterizi T4 - 440mm
U = 0,173 W/m²K

